

Chesapeake Retreats

Attention Kayak and Canoeing Clubs

Is your kayak-canoe club looking for an ideal spot to get away?

Why not experience Ransome's Chesapeake Retreat, located on the Chesapeake Bay, with over 1 mile of beautiful scenic waterfront. The Ransome's estate has its own boat ramp & harbor with direct access to the bay.

Kayak or canoe south to the quaint fishing village of Fishing Creek to have a delicious home-style meal at Ole Salty's Restaurant. If you wanted to continue on, paddle inland to another Ransome property where you can camp out & enjoy nature at its fullest. Continue your water route through the wildlife enriched estuary, returning via the open waters of the Chesapeake Bay to the Ransome's waterfront facility and awaiting hot tub.

This 12 mile trip makes for a great weekend excursion while exploring the bay & tributaries. Or travel over the 10 miles of backwater tributaries linking you to the Chesapeake Bay & both Ransome locations.

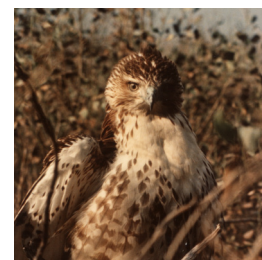
For more information or reservations

Call Percy & Marie at:

1-888-726-7863

1-856-778-4249 fax

www.chesapeake retreats.com





Home Amenities

The Ransome vacation house has all the necessities you'll need to "slip away from it all!" Rest assured we have thought of everything to make your stay as comfortable & pleasurable as possible.



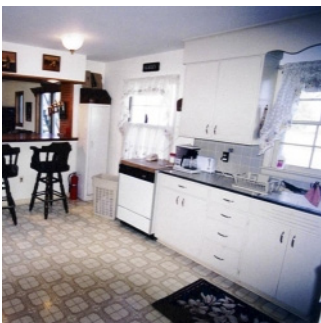
Included in your stay:



- Up to 12+ bedrooms
- Up to 6.5 bathrooms
- Central air conditioning
- Fully equipped kitchen
- Great room
- Family room
- Washer and dryer
- All linens
- Outdoor grill
- Hot tub!!!
- Satellite TV - VCR - Stereo - CD
- Screened in porch with 2 upper decks

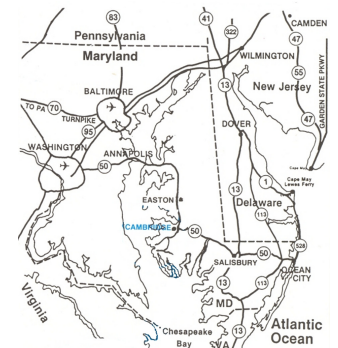


- One long mile of Chesapeake Bay shoreline
- Ideal source for exotic driftwood
- Over 700 acres of private farmland
- Dock & boat ramp (bring your own boat)
- Lookout peak with 360 degree vista of bay
- Crabbing & Fishing whenever you want
- Miles of walking paths and trails
- Fresh water pond
- 1/2 mile long winding private road/driveway
- Private beach front (accessible by boat)
- Gated entrance



From Cambridge on Route 50:

From Route 50 South, turn Right onto Route 16 West (Wal-Mart on corner.) - Drive 6.3 miles to Church Creek Turn Left onto Route 335 - Drive 10.6 miles to intersection with Gootee's Marina Turn Right (still Route 335) - Drive 3.4 miles (Catholic Church on Left) Turn Right onto Meekins Neck Road - Drive 1.2 miles 1st driveway on Left and you are "home"



Can accommodate 34+ comfortably!

A Logical & Lovely location for small gatherings.

www.chesapeakeeretreats.com
email: info@chesapeakeeretreats.com

